



# Queanbeyan-Palerang

April 2024

# QUEANBEYAN- PALERANG

Queanbeyan-Palerang is an area of approximately 5,300km<sup>2</sup> located between the eastern border of the ACT and the Great Dividing Range. Queanbeyan makes up the majority of the urban population and is a prospering river city. The balance of the population is made up by the townships of Bungendore and Braidwood and numerous smaller rural villages and hamlets such as Araluen, Captains Flat, Bywong, Majors Creek and Wamboin.

Queanbeyan-Palerang LGA



Ten years of rapid growth ensures that the benefits of living and working in Queanbeyan are no longer a secret, however the city has not lost its charm and remains unique, having a character and appeal quite different to the neighbouring Canberra suburbs.

Queanbeyan-Palerang Regional Council is heavily invested in ensuring the region continues to grow and is looking to commit over \$750 million in investment in the region over the next 10 years.



# QUEANBEYAN-PALERANG SNAPSHOT REGIONAL



POPULATION  
**64,233**  
0.8% of NSW

**TOP 4**  
GRP BY INDUSTRY



GRP  
**\$3,763m**  
0.5% of NSW

OWNERSHIP OF DWELLINGS  
**\$551.3m**



NUMBER OF  
LOCAL BUSINESSES  
**5,580**  
0.6% of NSW

CONSTRUCTION  
 **\$520.4m**



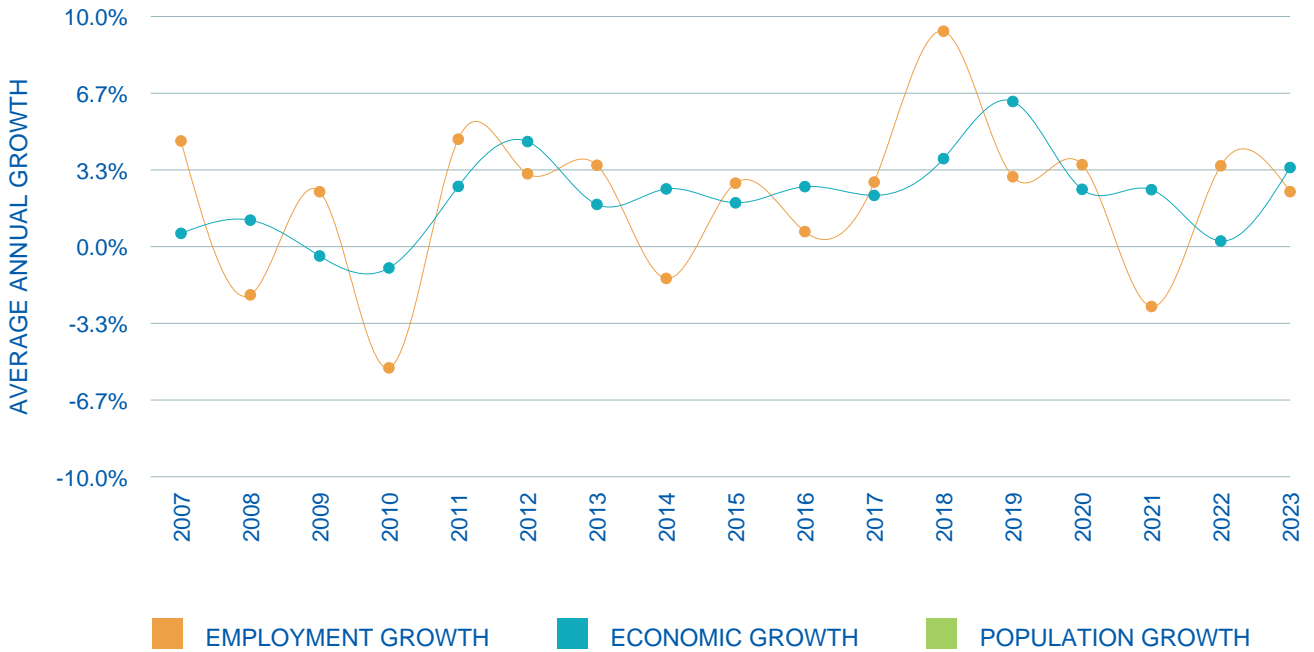
AVERAGE AGE  
**37.8 Yrs**  
39.4 in NSW

PUBLIC ADMINISTRATION & SAFETY  
 **\$432.3m**

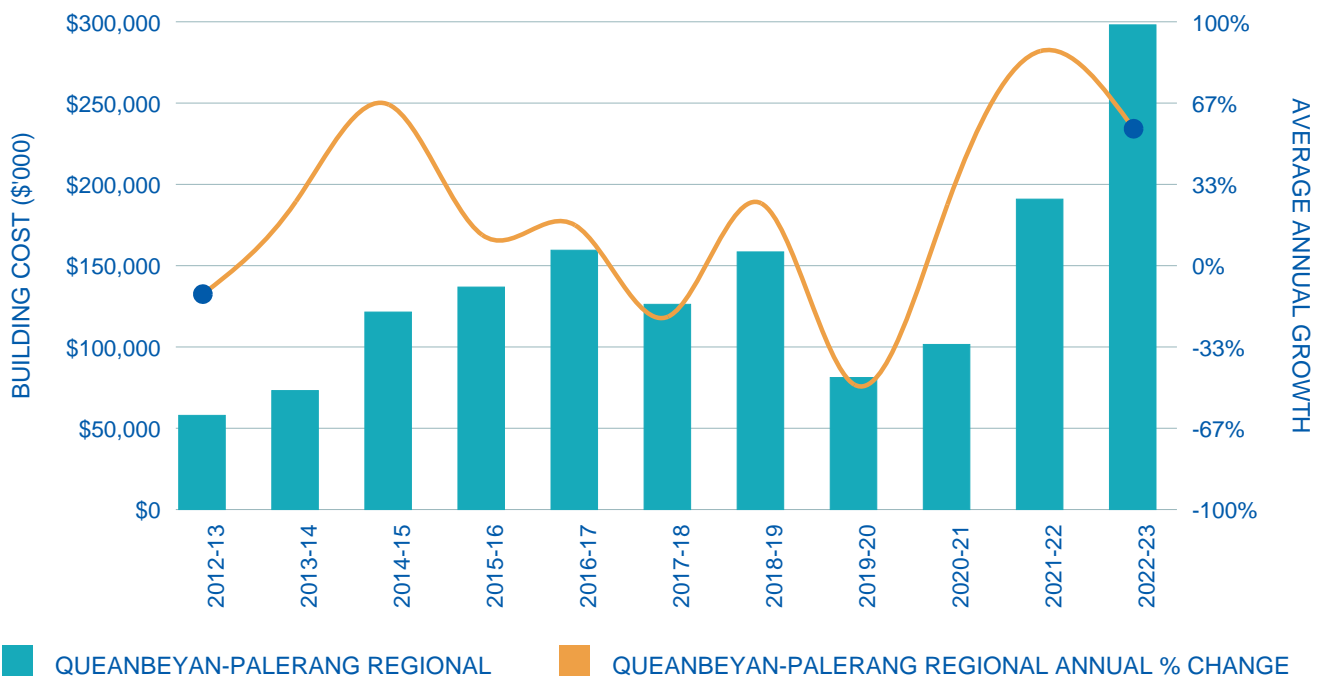
MANUFACTURING  
 **\$325.6m**



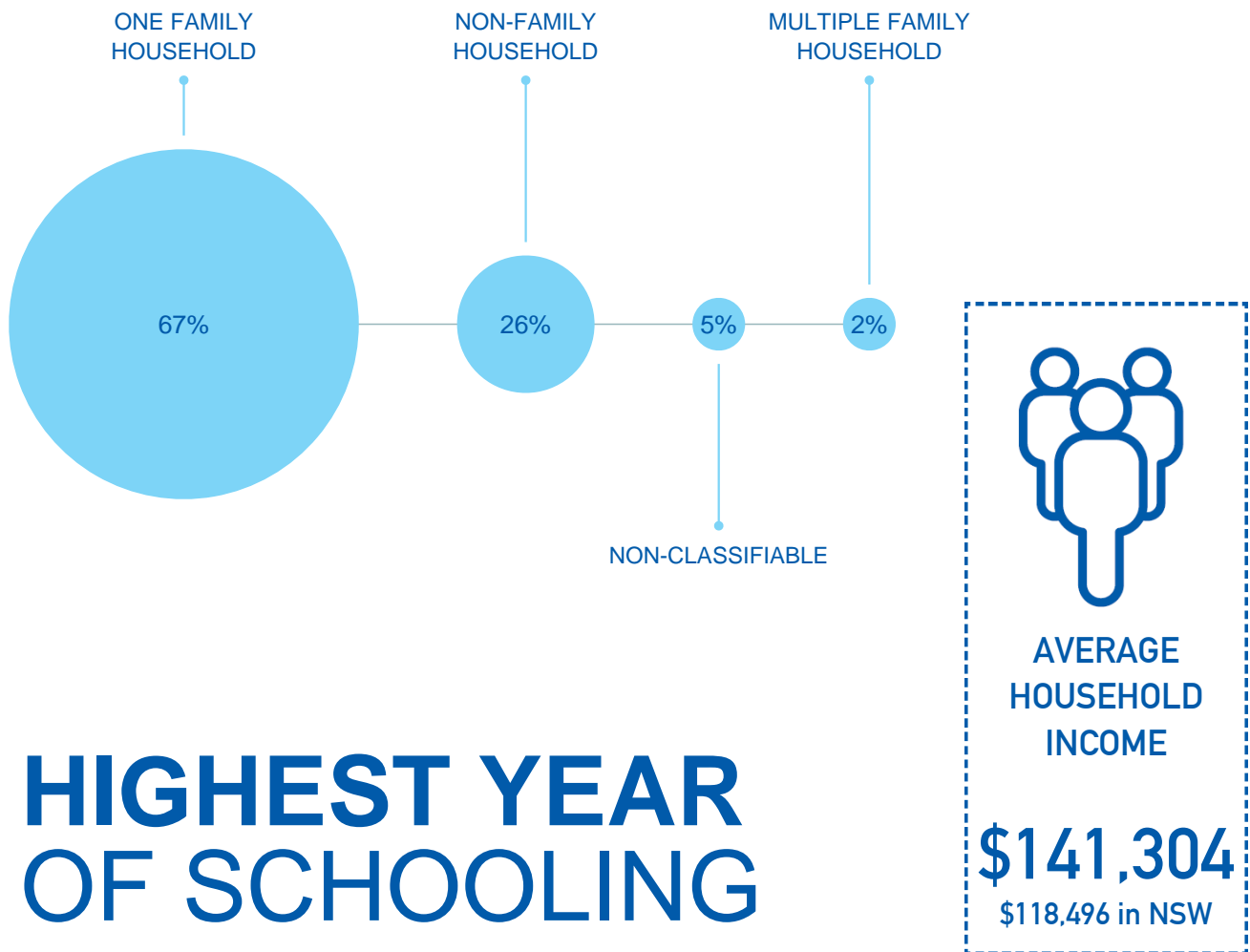
# GROWTH DATA SUMMARY



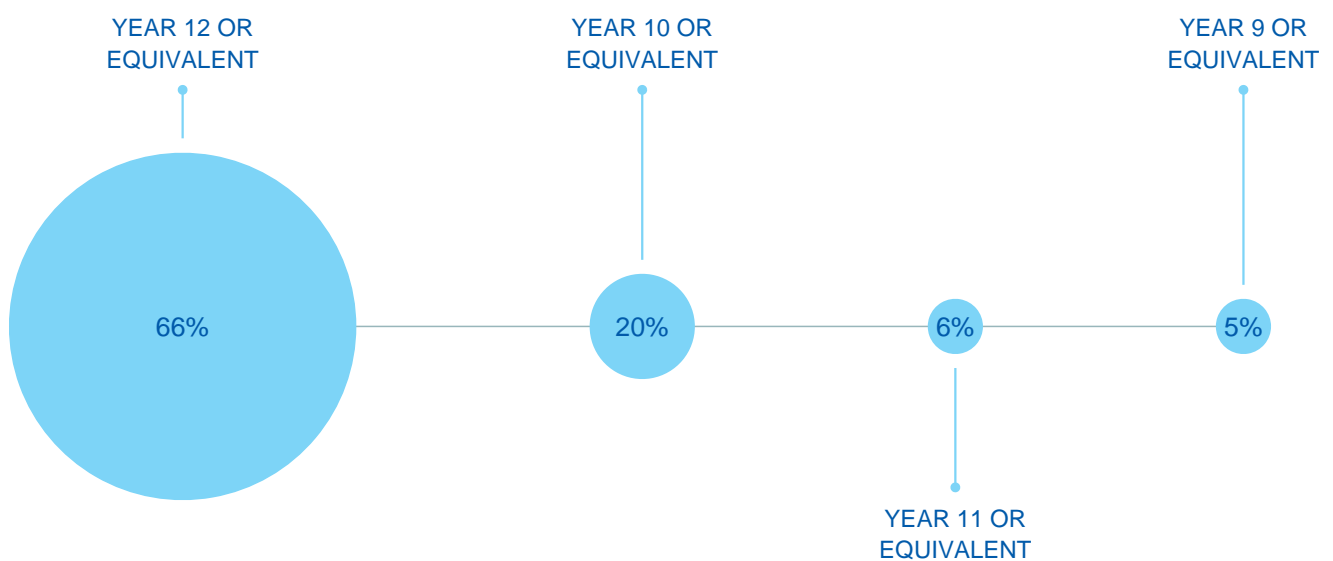
# RESIDENTIAL BUILDING APPROVALS



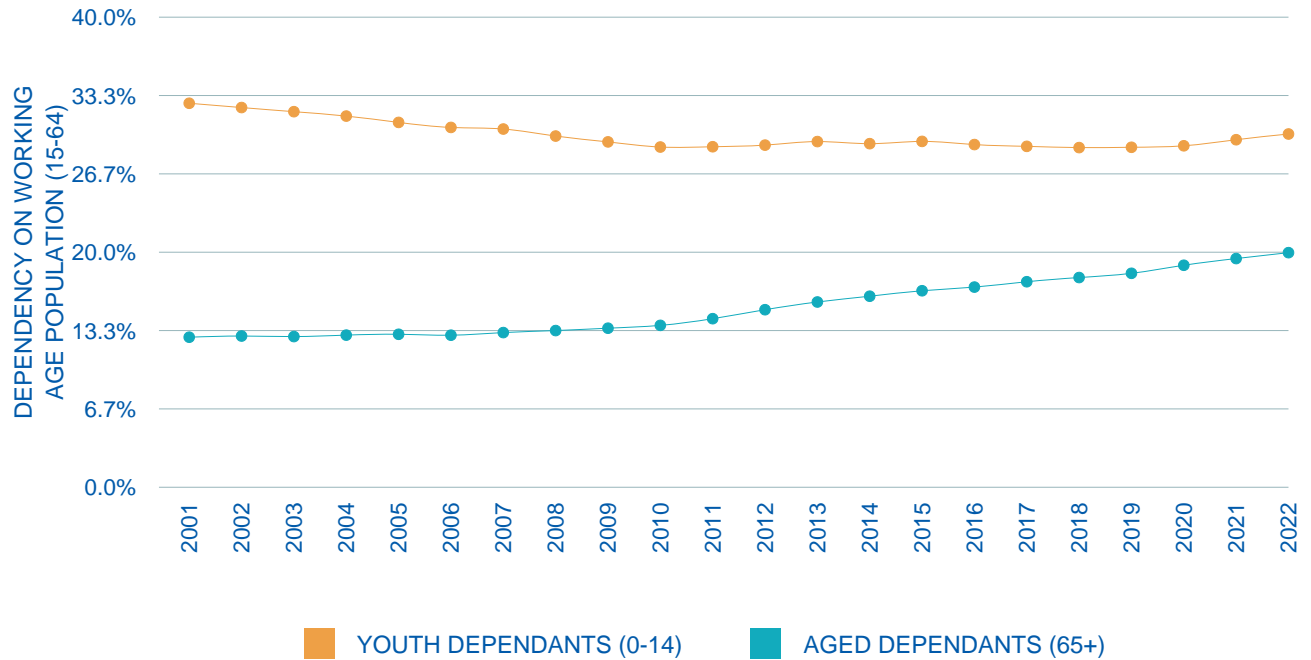
# HOUSEHOLD COMPOSITION



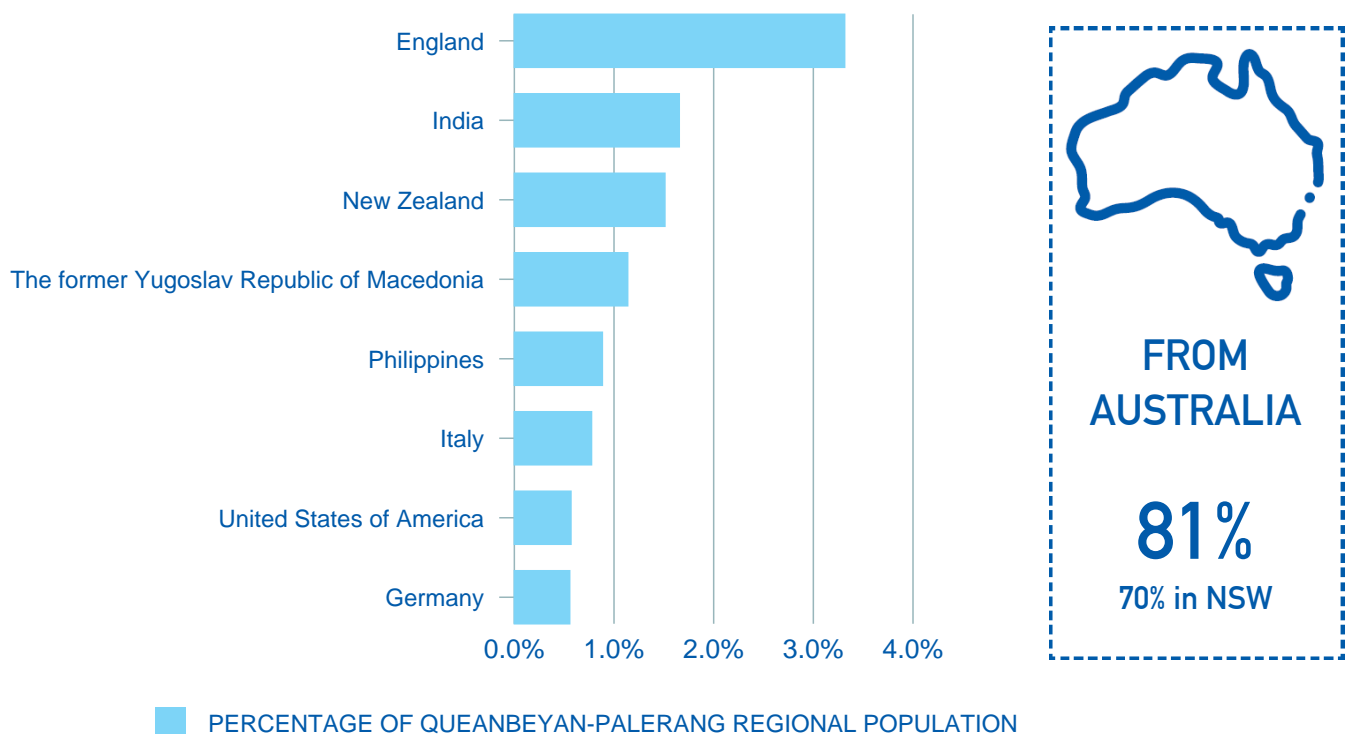
# HIGHEST YEAR OF SCHOOLING



# DEPENDENCY RATIOS



# CULTURAL BACKGROUND



# TOURISM SUMMARY

YEAR ENDING  
2019-20



TOTAL VISITORS  
**575**  
(000's)



INTERSTATE  
**10.5%**



INTERNATIONAL  
**0.5%**

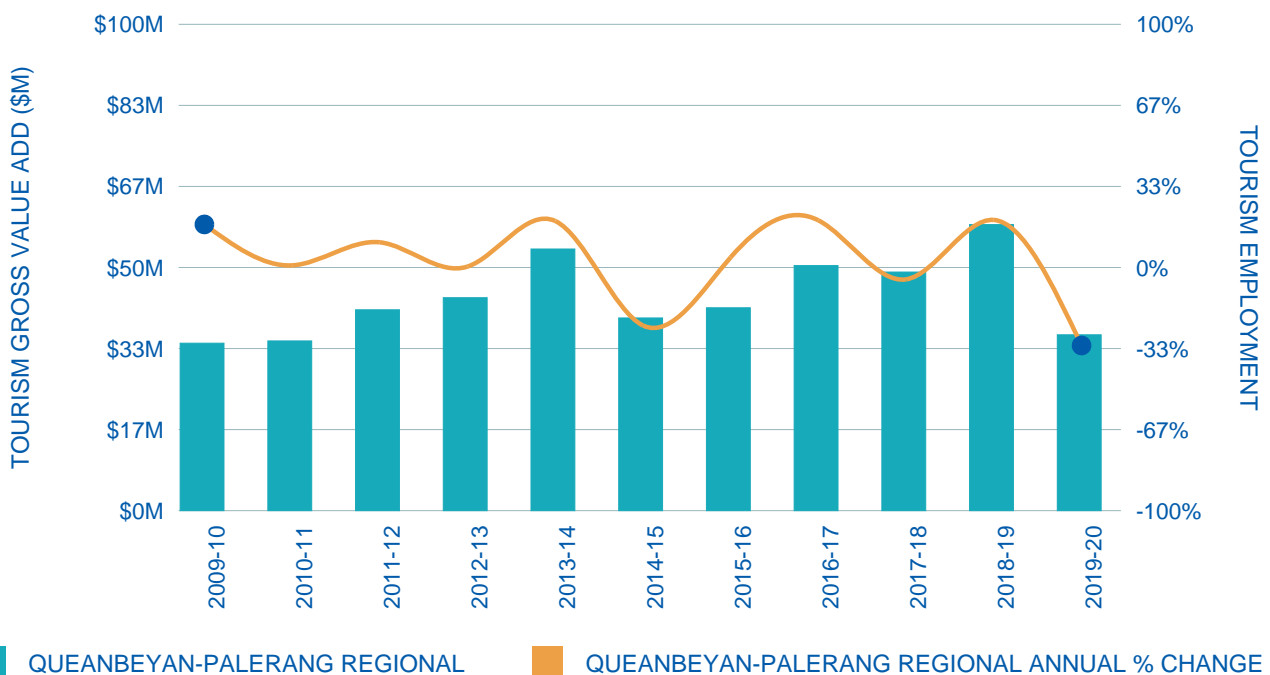


INTRASTATE  
**31.3%**

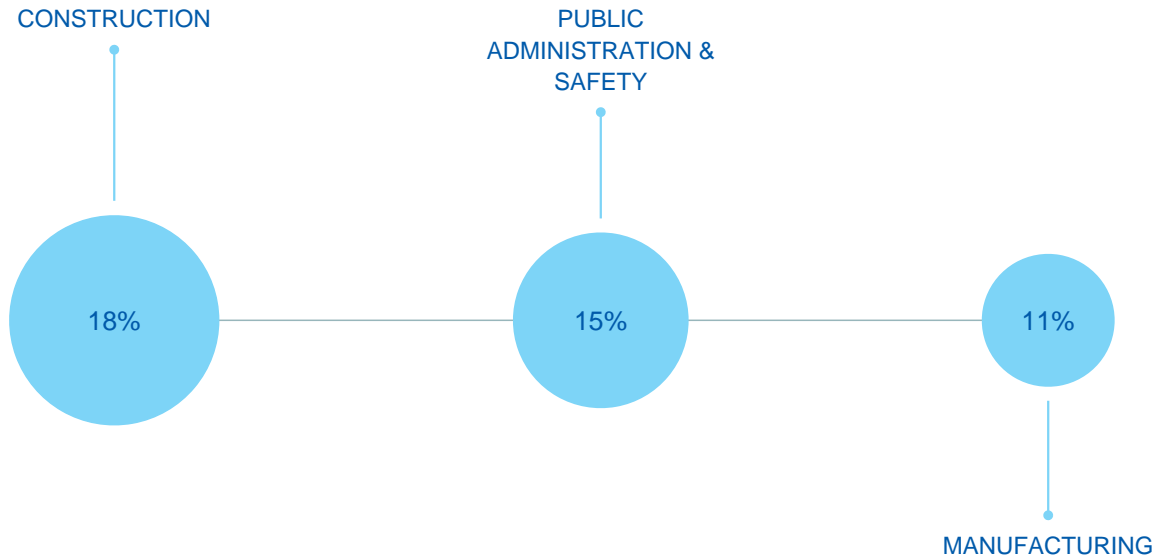


DAYTRIPS  
**57.7%**

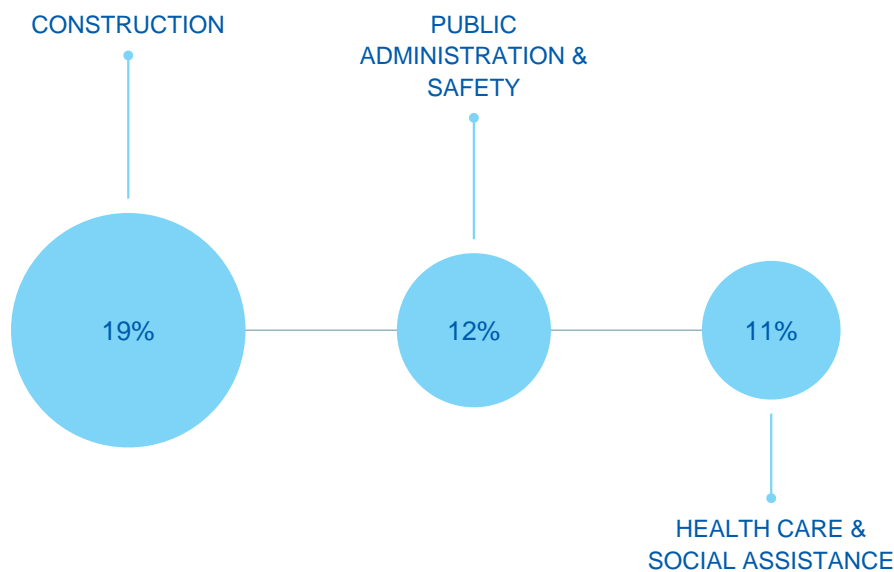
# VALUE OF TOURISM



# INDUSTRY VALUE ADD BY TOP 3 SECTORS



# EMPLOYMENT BY INDUSTRY



**NUMBER OF LOCAL JOBS**  
**19,356**





Regional Development Australia Southern  
NSW and ACT  
T: 02 4822 6397  
E: [admin@rdasna.org.au](mailto:admin@rdasna.org.au)  
W: [www.rdasna.org.au](http://www.rdasna.org.au)

Image credit: Destination NSW

Powered by



**DataAU**

Disclaimer: Whilst all care and diligence have been exercised in the preparation of this data, AEC Group Pty Ltd (or its associated parties) do not warrant the accuracy of the information contained within and accept no liability for any loss of damage that may be suffered as a result of reliance on this information, whether or not there has been any error, omission or negligence in the development and presentation of information contained in DataAU by the employees, associated parties or information providers of AEC Group Pty Ltd. It is the nature of this data that it may quickly become out of date, and users must make their own assessment of the relevance and accuracy of the data for their intended purpose. No representation is provided regarding the timeliness or accuracy of updated materials.