



Upper Lachlan Shire

April 2024



UPPER LACHLAN SHIRE

Upper Lachlan is an area that is known for its quaint villages, fine wool, potato production, wind farms, history and picturesque countryside. The Upper Lachlan region sits high on the Great Dividing Range in the New South Wales Southern Tablelands and is bounded by the Abercrombie, Wollondilly and Lachlan rivers. The regional centre is the township of Crookwell which is 45km west of Goulburn, about 110km north of Canberra and about 130km south-east of Bathurst. Sydney's CBD is a picturesque 2 ½ hour drive.

Upper Lachlan Shire
LGA



While agriculture is the main industry in Upper Lachlan Shire, there are many opportunities for employment in the area including manufacturing, retail, service industries, hospitality and much more.

The diverse and unique market mix means there are opportunities to establish new business activities, including manufacturing, creating goods for a niche market or expanding upon the existing businesses and services already in place.



UPPER LACHLAN SHIRE SNAPSHOT



POPULATION

8,551
0.1% of NSW

TOP 4
GRP BY INDUSTRY



GRP

\$493m
0.1% of NSW

AGRICULTURE, FORESTRY & FISHING



\$126.3m



NUMBER OF
LOCAL BUSINESSES

1,505
0.2% of NSW

OWNERSHIP OF DWELLINGS

\$71.5m



AVERAGE AGE

44.7 Yrs
39.4 in NSW

CONSTRUCTION



\$32.7m

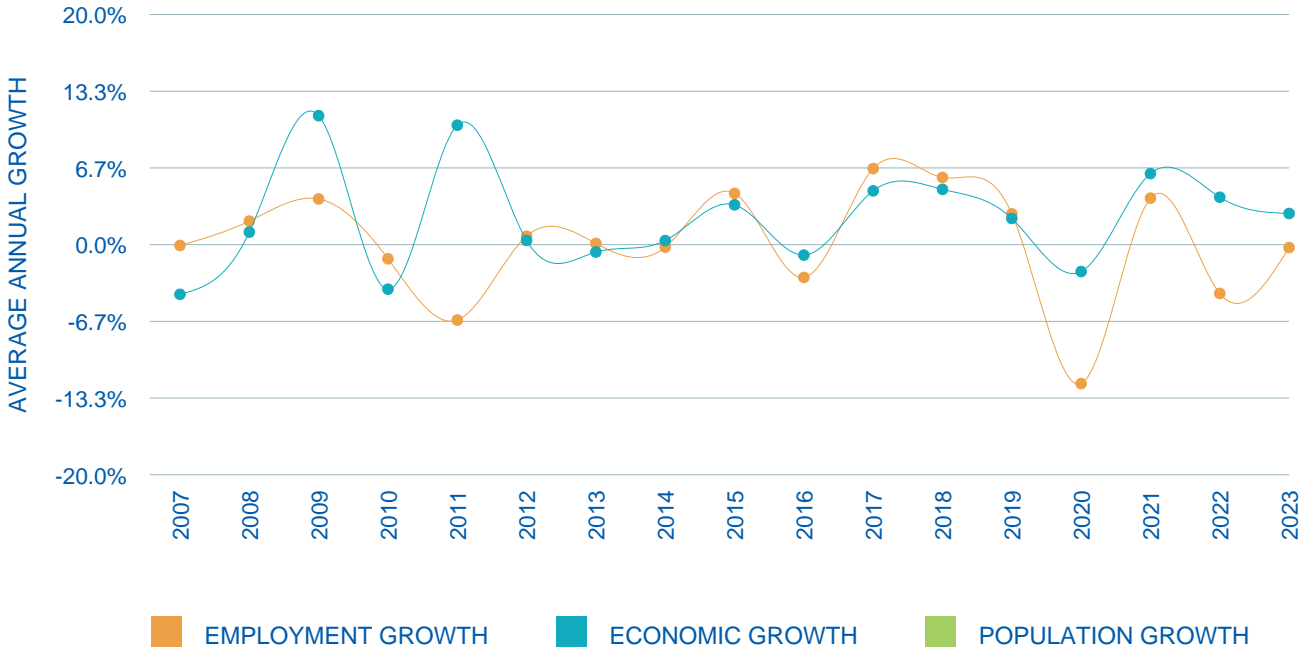
HEALTH CARE & SOCIAL ASSISTANCE



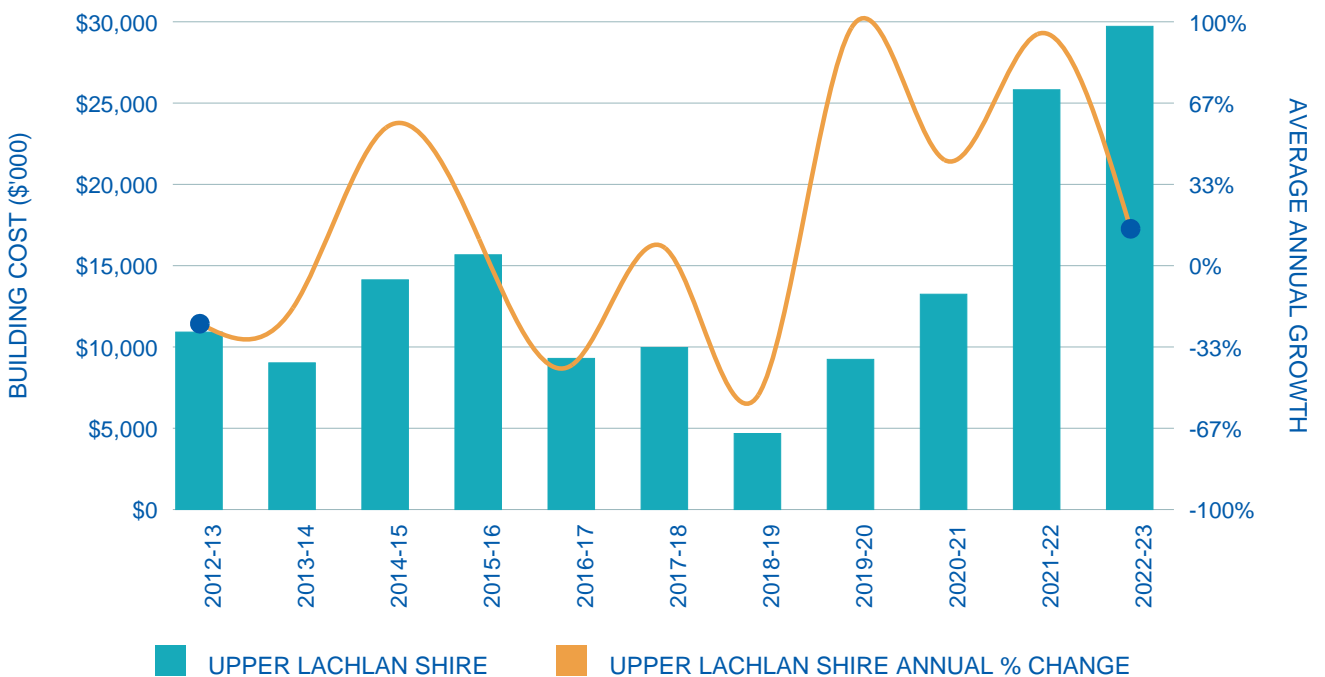
\$29.6m



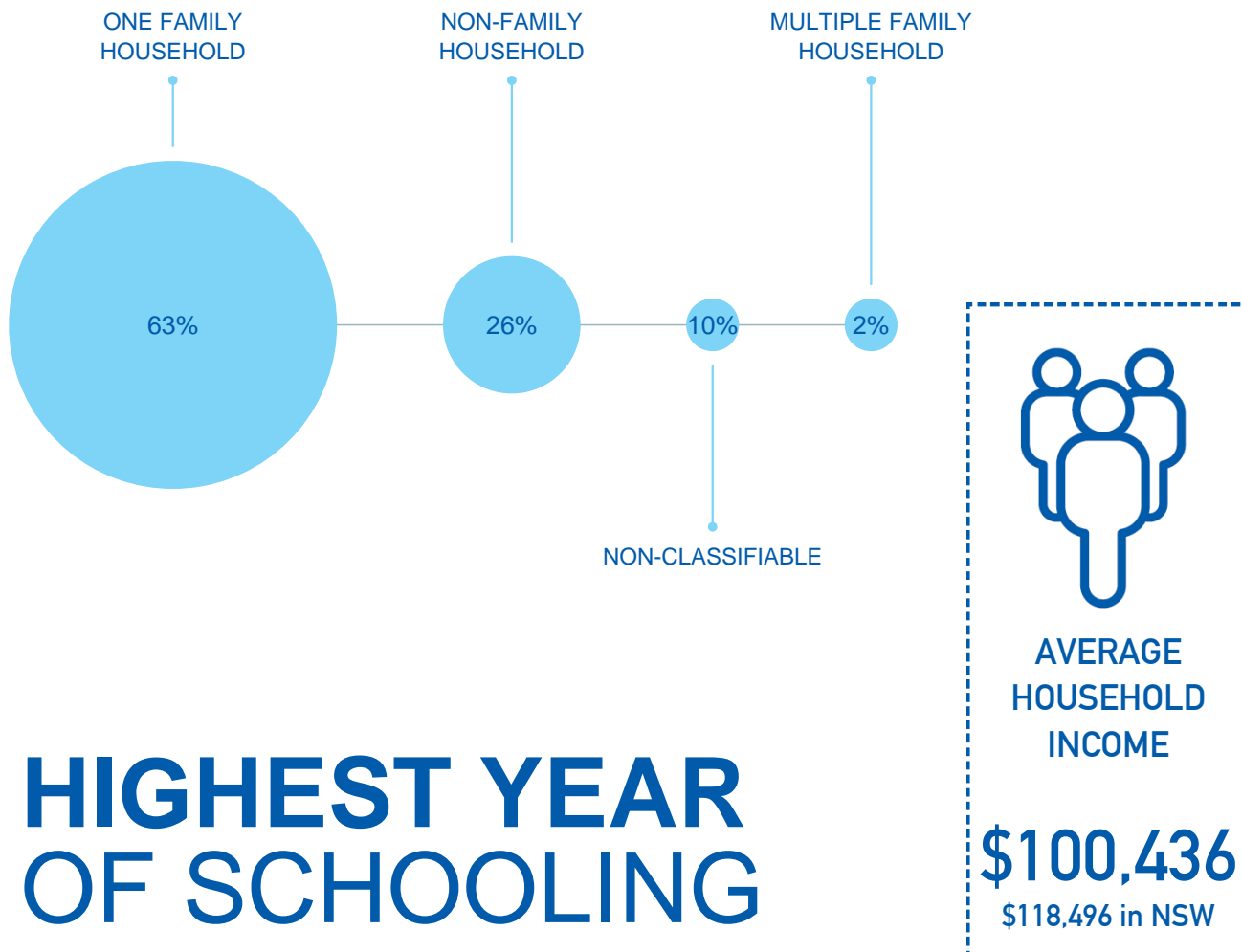
GROWTH DATA SUMMARY



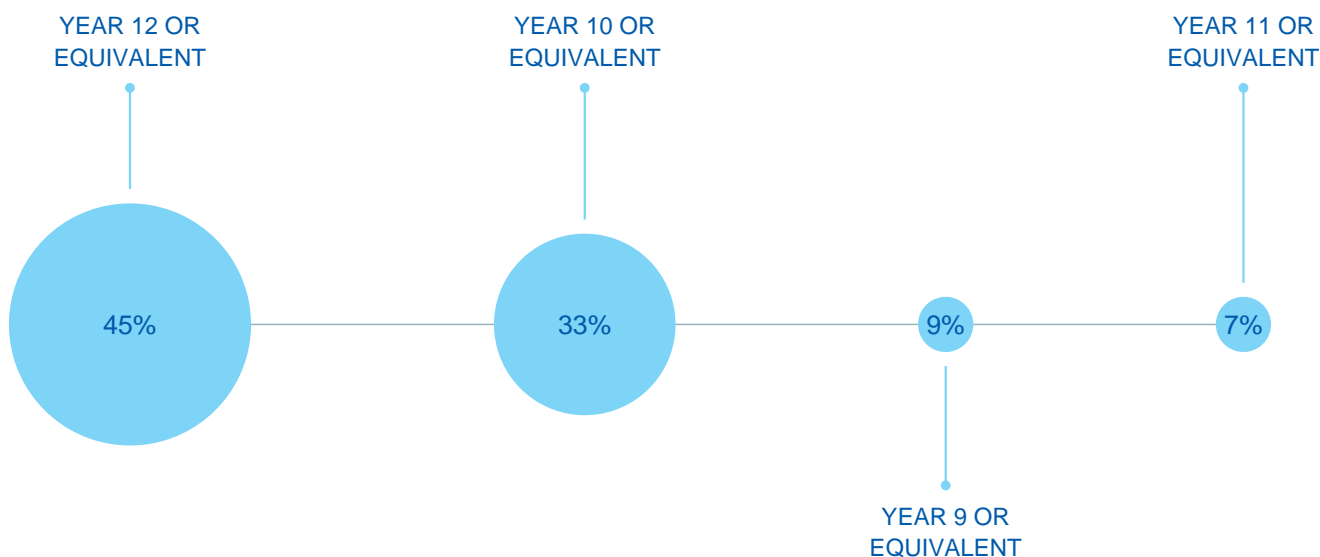
RESIDENTIAL BUILDING APPROVALS



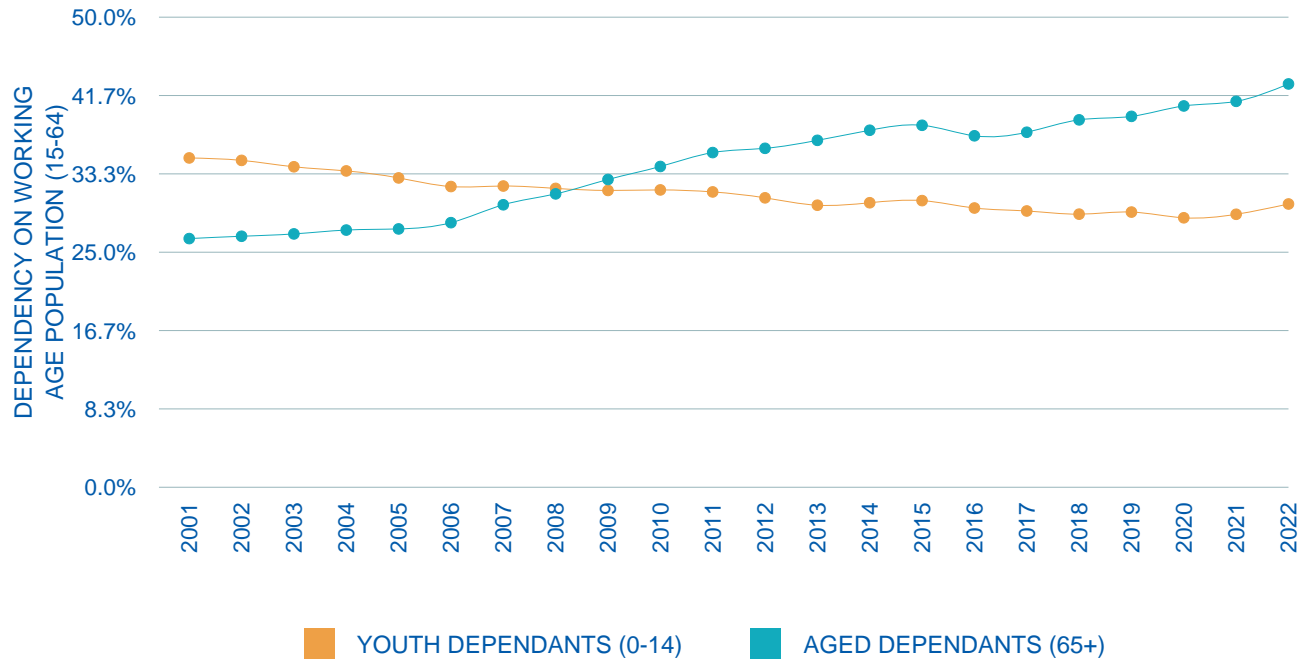
HOUSEHOLD COMPOSITION



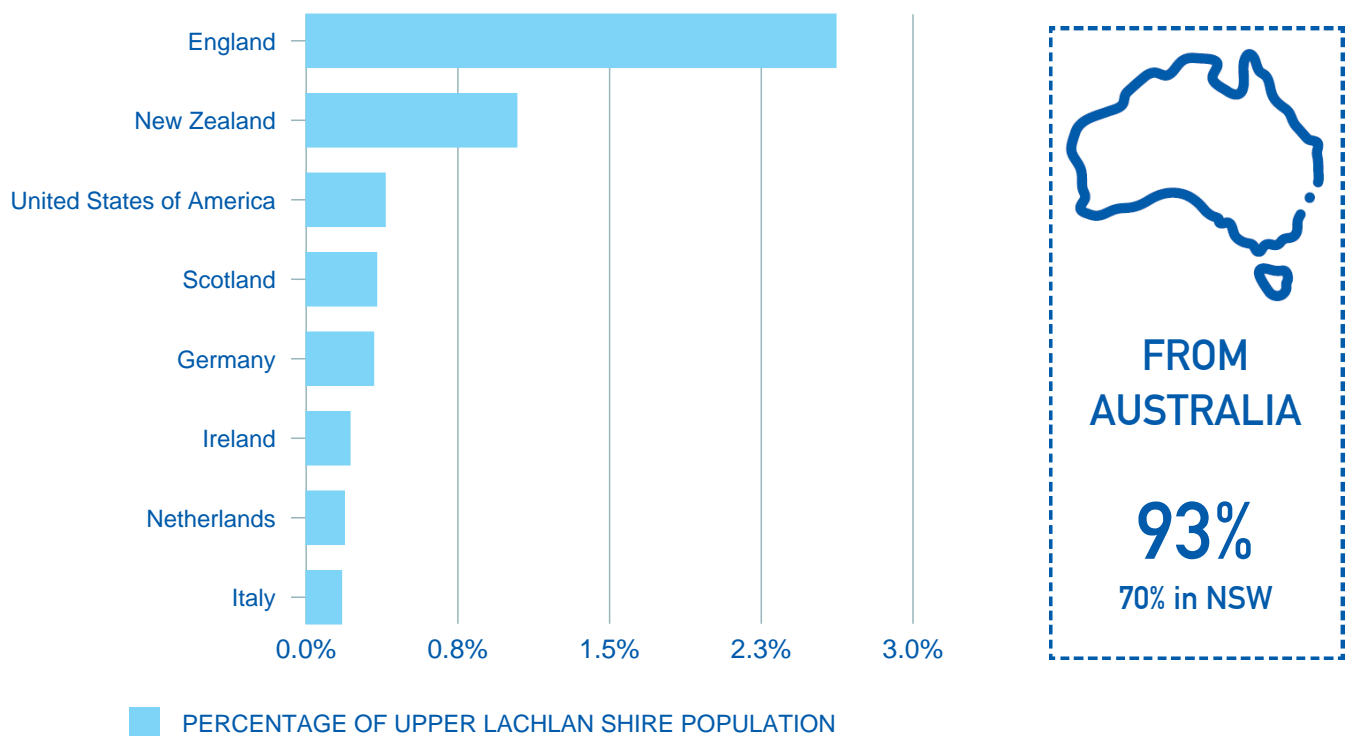
HIGHEST YEAR OF SCHOOLING



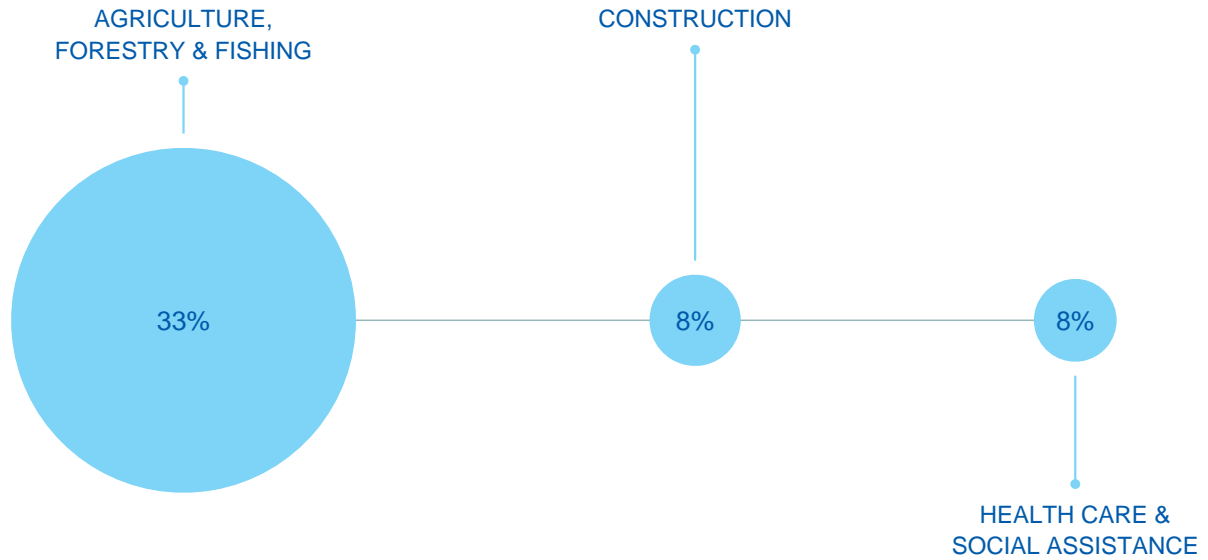
DEPENDENCY RATIOS



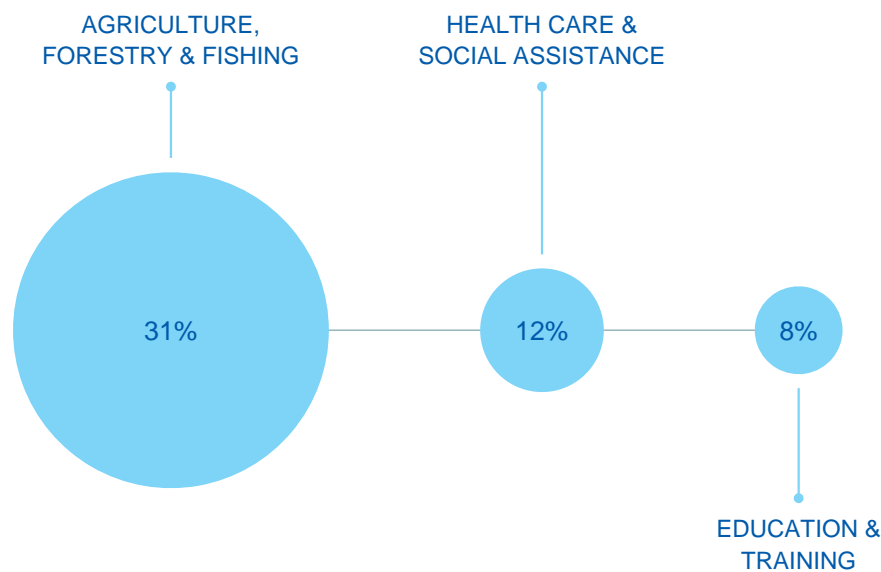
CULTURAL BACKGROUND



INDUSTRY VALUE ADD BY TOP 3 SECTORS



EMPLOYMENT BY INDUSTRY



NUMBER OF LOCAL JOBS
2,605



Regional Development Australia Southern
NSW and ACT
T: 02 4822 6397
E: admin@rdasna.org.au
W: www.rdasna.org.au

Image credit: Destination NSW



Powered by

DataAU

Disclaimer: Whilst all care and diligence have been exercised in the preparation of this data, AEC Group Pty Ltd (or its associated parties) do not warrant the accuracy of the information contained within and accept no liability for any loss of damage that may be suffered as a result of reliance on this information, whether or not there has been any error, omission or negligence in the development and presentation of information contained in DataAU by the employees, associated parties or information providers of AEC Group Pty Ltd. It is the nature of this data that it may quickly become out of date, and users must make their own assessment of the relevance and accuracy of the data for their intended purpose. No representation is provided regarding the timeliness or accuracy of updated materials.